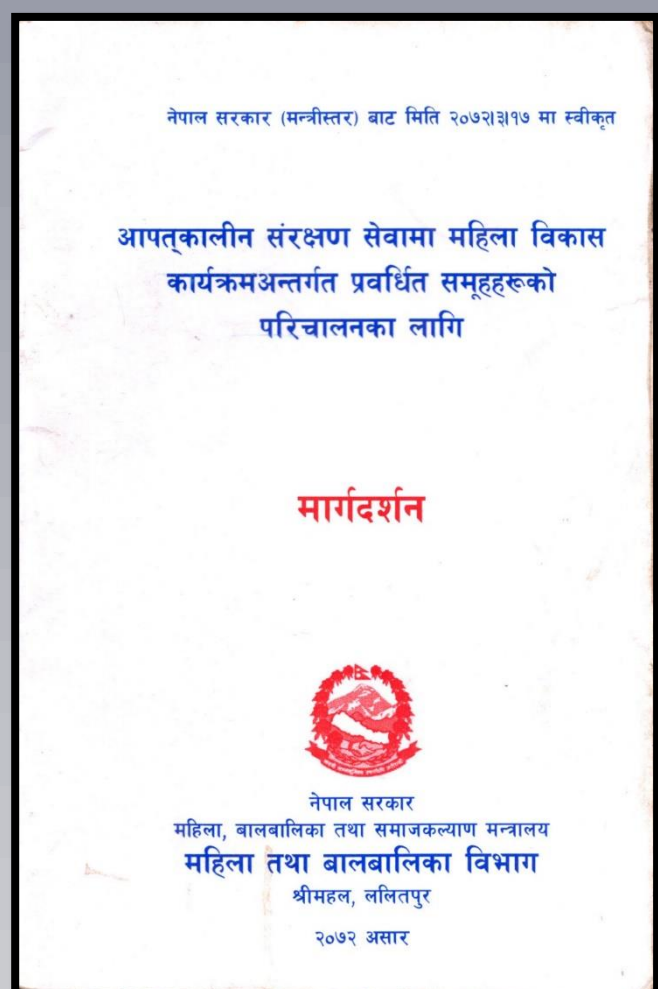


# “Integration of Psychosocial Support in Protection System in Post Disaster context of Nepal”

*Parbati Shrestha Transcultural Psychosocial Organization Nepal (TPO Nepal)*

*Upama Malla, UNICEF Nepal*

## Background and Objective



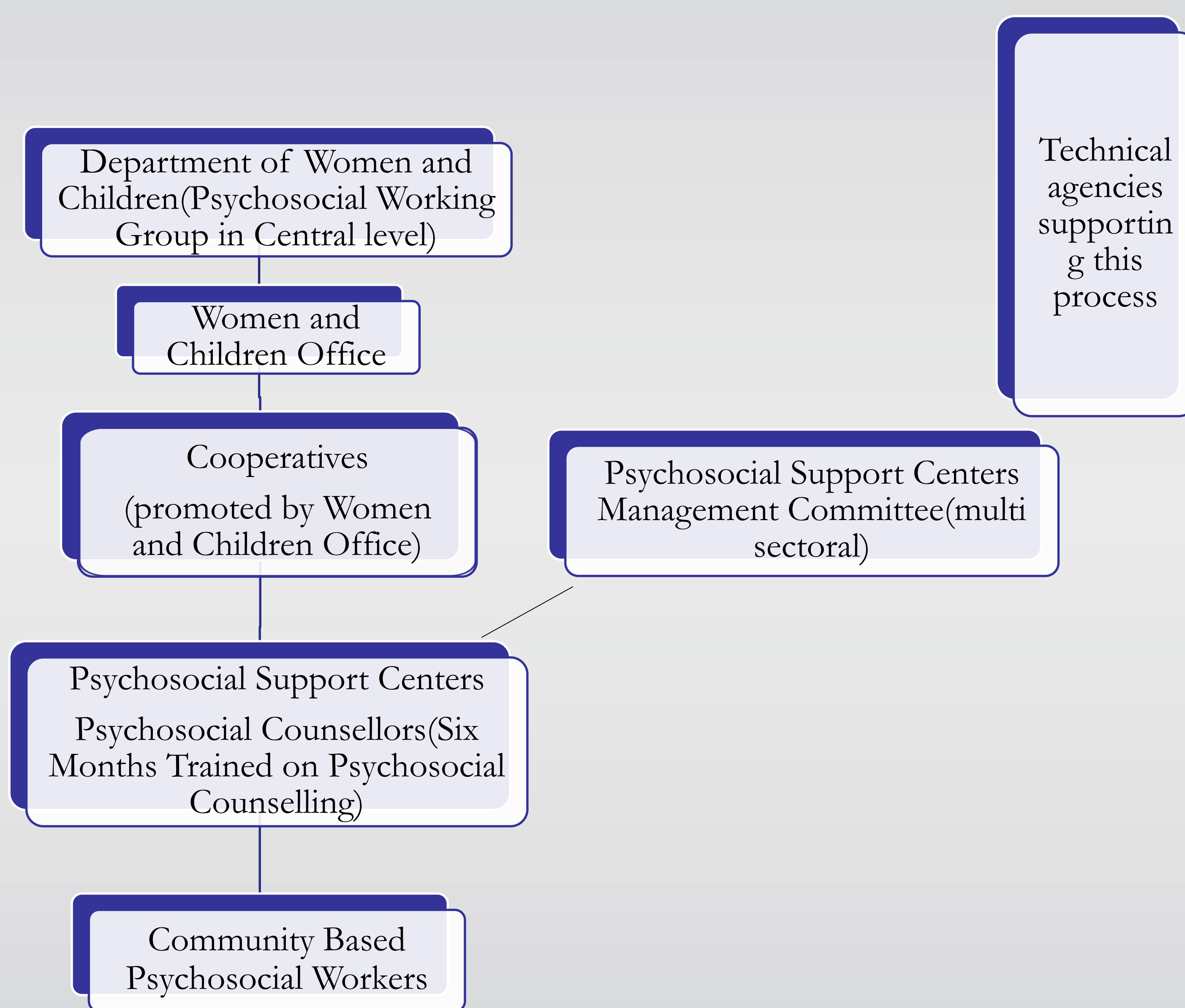
**Background:** Long term psychosocial support is required in earthquake affected communities to ensure their psychosocial wellbeing

**Objective:** Capacitate Women and Children Office (WCO) under DWC to provide psychosocial support to children and families in the Earthquake affected communities

## Key Results

- Program supported to establish psychosocial support (PSS) centers through WCO in earthquake affected communities, psychosocial services became accessible to vulnerable communities.
- Women and children in 14 districts received psychosocial support from trained counsellors that our program capacitated
- Mobilization of Community Based Psychosocial Workers and awareness raising in communities has helped to reduce stigma to some extent associated with mental health problem and communities have started to accept psychosocial support

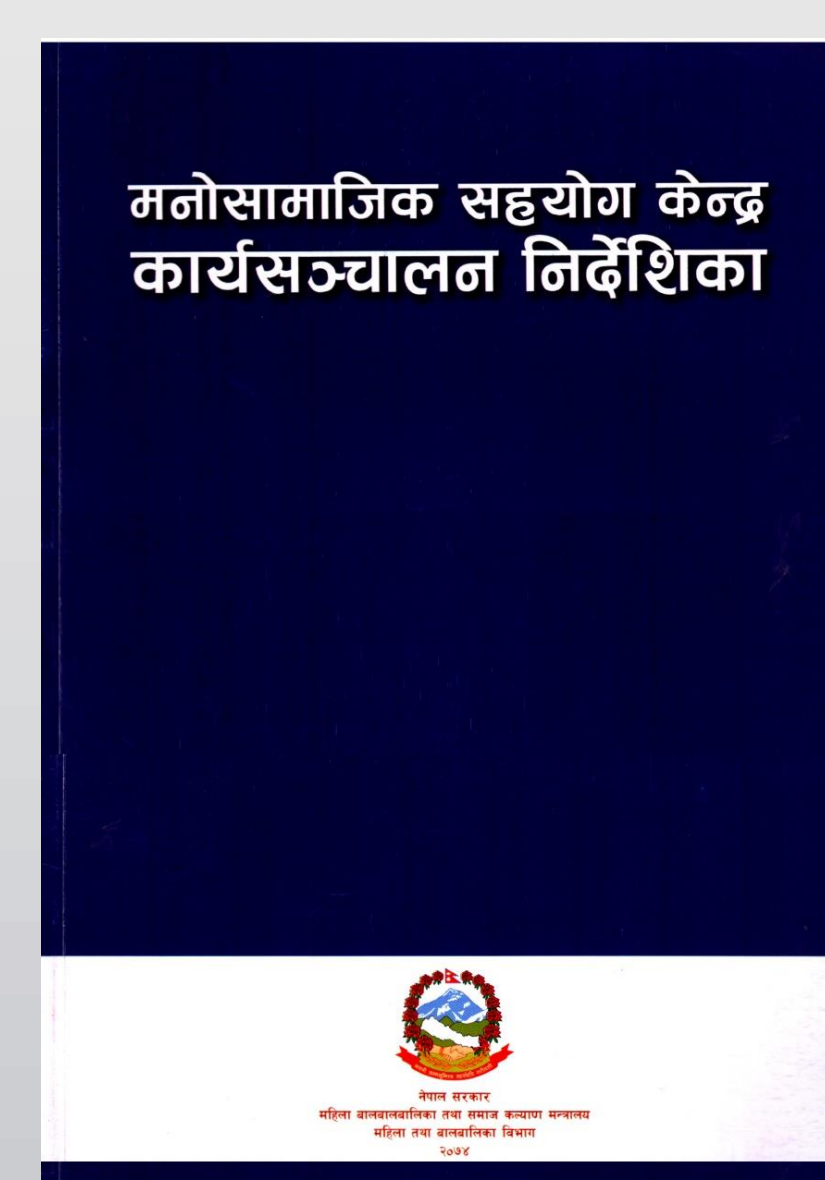
## Implementation Modality



## Lesson Learnt

- Psychosocial support related intervention was integrated through DWC regular program to ensure sustainability of this issue.
- Standard Operating Procedures for Psychosocial Support Centers, developed by Psychosocial Working Group formed under protection cluster under the leadership of DWC has provided guidance to ensure effective management of PSS centers.
- Capacitated counsellors from the community can be quickly mobilize in future emergencies

## Benefit of Operating Psychosocial Support Centers in Community



Standard Operating Procedures for Psychosocial Support Centers- developed by Psychosocial Working Group



Low budget (operation cost is only NPR165,000 per center for a year)



Community ownership



Can be quickly mobilize in emergencies



Cultural appropriated services available in centers



Resources for community to deal with psychosocial and Mental Health issue

## Role of Technical Agency

Mentoring and supervision of psychosocial counsellors

Technical support to establish and operationalize psychosocial centers

Advocacy at all levels for the sustainability of the psychosocial support centers

Emergency support to the children and families

Technical support for safe identification and safe referrals

Awareness raising at the community level

Community mobilization



## Conclusions

- An innovative approach to strengthen the psychosocial support mechanism to address the psychosocial needs in humanitarian and non humanitarian situation.
- In the changing political scenario, intensive advocacy is required to integrate psychosocial support intervention in the plans of Gaunpalika/Nagarpalika. With technical support in place, this can then be scaled up in all the rural and municipality of Nepal.

**Acknowledgement:** The information is based on psychosocial support program implemented by TPO Nepal in co-ordination with Department of Women and Children(DWC) and with technical/ financial support from UNICEF